

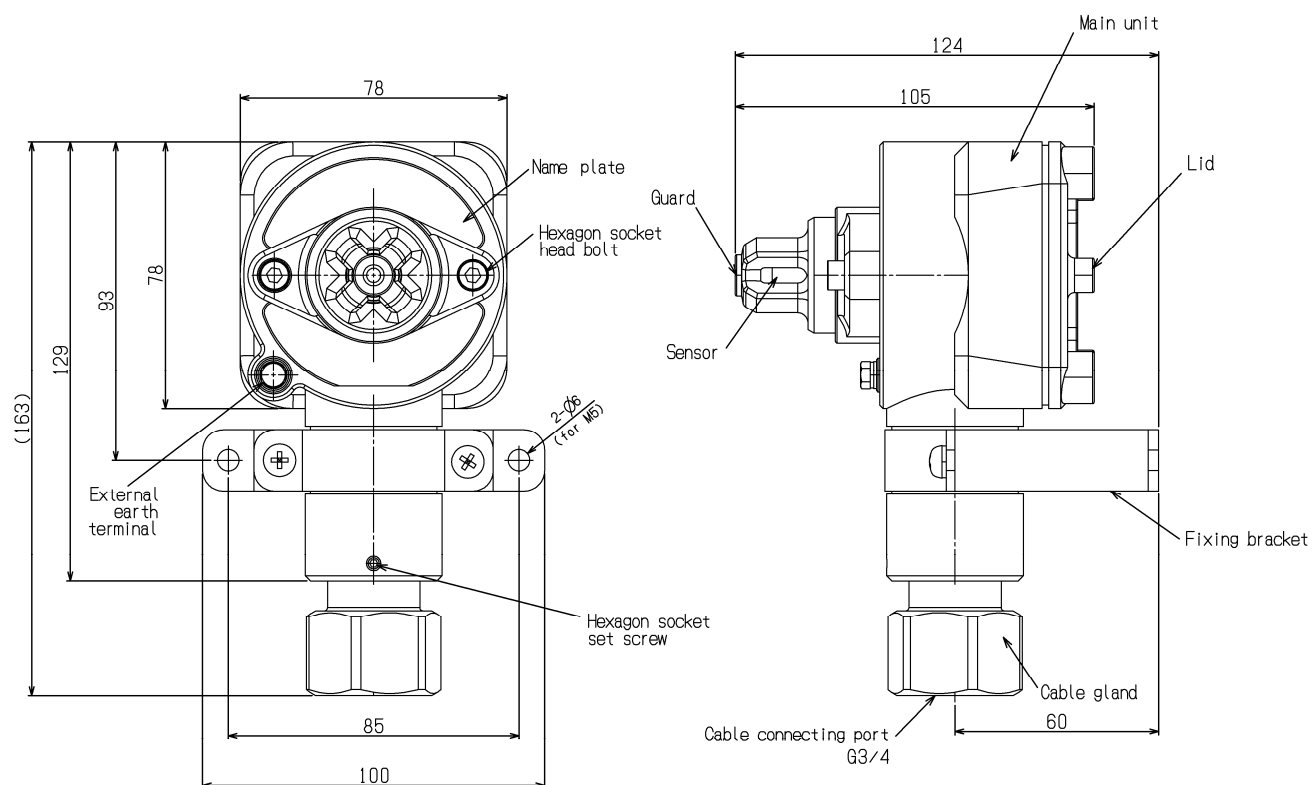
GAS DETECTOR UNIT GD-A80 (ATEX - IECEx) SPECIFICATION

Model	GD-A80
Principle of detection	Catalytic combustion method / New ceramic method
Detection gas	Combustible gas in the air
Detection method	Diffusion type
Transmission cable	CVV 1.25mm ² or 2mm ² - 4-core
Cabling connecting port*1	Pressure proof packing gland <G3/4> (Compatible cables ϕ 9.5 - 13.0mm in outer diameter)
Operating temperature range*2	-20 - +53°C (at a constant condition)
Operating humidity range	Below 95%RH (Non-condensing)
Structure	Wall mount type, 2B(50A) pipe attachable
Explosion-proof structure	Flame-proof enclosures
Explosion-proof class	II 2 G Ex db IIC T4 Gb(ATEX)/Ex db IIC T4 Gb(IECEx)
Outer dimension	Approx. 78(W) × 163(H) × 105(D)mm (Fixing brackets excluded)
Weight	Approx. 1.0kg
Outer color	Munsell 7.5BG5/2 Name plate : red

*1 Please specify your request when ordering.

*2 The ambient temperature range which maintain a capability of explosion proof of the label on the detector is -40 - +53°C. However, the available operating temperature range is -20 - +53°C.

Outline Drawings



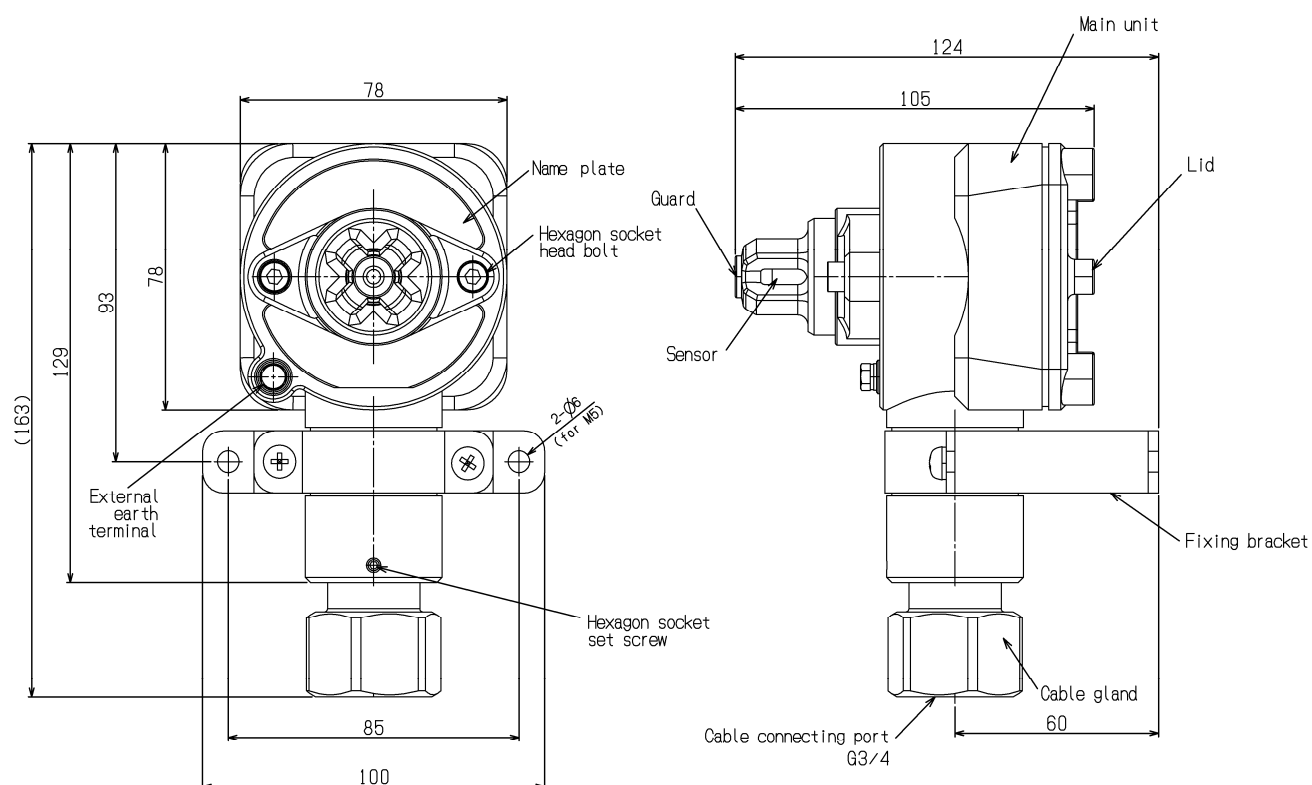
GAS DETECTOR UNIT **GD-A80V (ATEX - IECEx) SPECIFICATION**

Model	GD-A80V
Principle of detection	Semiconductor method
Detection gas	Combustible gas / Toxic gas in the air
Detection method	Diffusion type
Transmission cable	CVVS 1.25mm ² or 2mm ² - 3-core
Cabling connecting port*1	Pressure proof packing gland <G3/4> (Compatible cables ϕ 9.5 - 13.0mm in outer diameter)
Operating temperature range*2	-20 - +53°C (at a constant condition)
Operating humidity range	Below 95%RH (Non-condensing)
Structure	Wall mount type, 2B(50A) pipe attachable
Explosion-proof structure	Flame-proof enclosures
Explosion-proof class	II 2 G Ex db II C T4 Gb (ATEX) / Ex db II C T4 Gb (IECEx)
Outer dimension	Approx. 78(W) × 163(H) × 105(D)mm (Fixing brackets excluded)
Weight	Approx. 1.0kg
Outer color	Munsell 7.5BG5/2 Name plate : yellow

*1 Please specify your request when ordering.

*2 The ambient temperature range which maintain a capability of explosion proof of the label on the detector is -40 - +53°C. However, the available operating temperature range is -20 - +53°C.

Outline Drawings



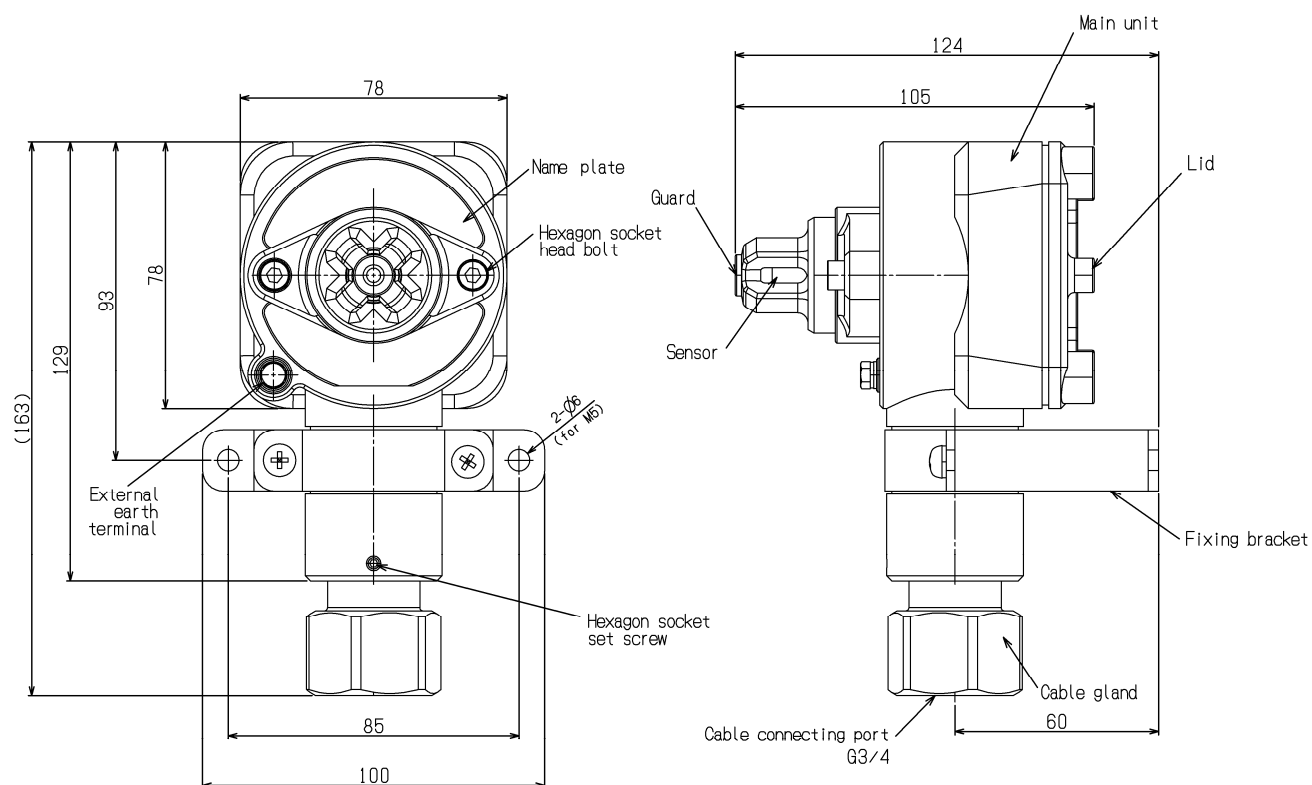
GAS DETECTOR UNIT GD-A80S (ATEX - IECEx) SPECIFICATION

Model	GD-A80S
Principle of detection	Hot wire semiconductor method
Detection gas	Combustible gas / Toxic gas in the air
Detection method	Diffusion type
Transmission cable	CVVS 1.25mm ² or 2mm ² - 4-core
Cabling connecting port*1	Pressure proof packing gland <G3/4> (Compatible cables ϕ 9.5 - 13.0mm in outer diameter)
Operating temperature range*2	-20 - +53°C (at a constant condition)
Operating humidity range	Below 95%RH (Non-condensing)
Structure	Wall mount type, 2B(50A) pipe attachable
Explosion-proof structure	Flame-proof enclosures
Explosion-proof class	II 2 G Ex db IIC T4 Gb(ATEX)/Ex db IIC T4 Gb(IECEx)
Outer dimension	Approx. 78(W) × 163(H) × 105(D)mm (Fixing brackets excluded)
Weight	Approx. 1.0kg
Outer color	Munsell 7.5BG5/2 Name plate : blue

*1 Please specify your request when ordering.

*2 The ambient temperature range which maintain a capability of explosion proof of the label on the detector is -40 - +53°C. However, the available operating temperature range is -20 - +53°C.

Outline Drawings



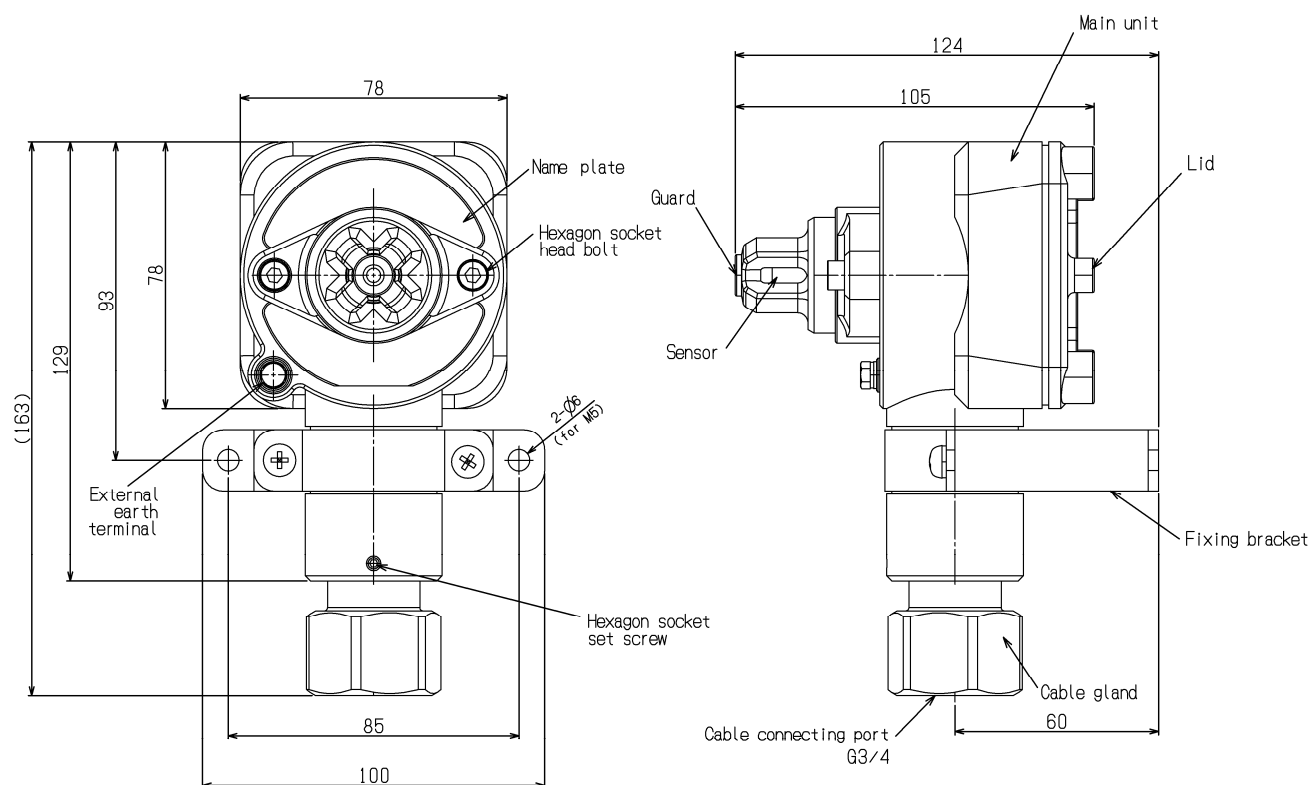
GAS DETECTOR UNIT GD-A80N (ATEX - IECEx) SPECIFICATION

Model	GD-A80N
Principle of detection	Thermal conductivity method
Detection gas	Combustible gases in the air/inert gas
Detection method	Diffusion type
Transmission cable	CVVS 1.25mm ² or 2mm ² - 4-core
Cabling connecting port*1	Pressure proof packing gland <G3/4> (Compatible cables ϕ 9.5 - 13.0mm in outer diameter)
Operating temperature range*2	-20 - +53°C (at a constant condition)
Operating humidity range	Below 95%RH (Non-condensing)
Structure	Wall mount type, 2B(50A) pipe attachable
Explosion-proof structure	Flame-proof enclosures
Explosion-proof class	II 2 G Ex db IIC T4 Gb(ATEX)/Ex db IIC T4 Gb(IECEx)
Outer dimension	Approx. 78(W) × 163(H) × 105(D)mm (Fixing brackets excluded)
Weight	Approx. 1.0kg
Outer color	Munsell 7.5BG5/2 Name plate : red

*1 Please specify your request when ordering.

*2 The ambient temperature range which maintain a capability of explosion proof of the label on the detector is -40 - +53°C. However, the available operating temperature range is -20 - +53°C.

Outline Drawings



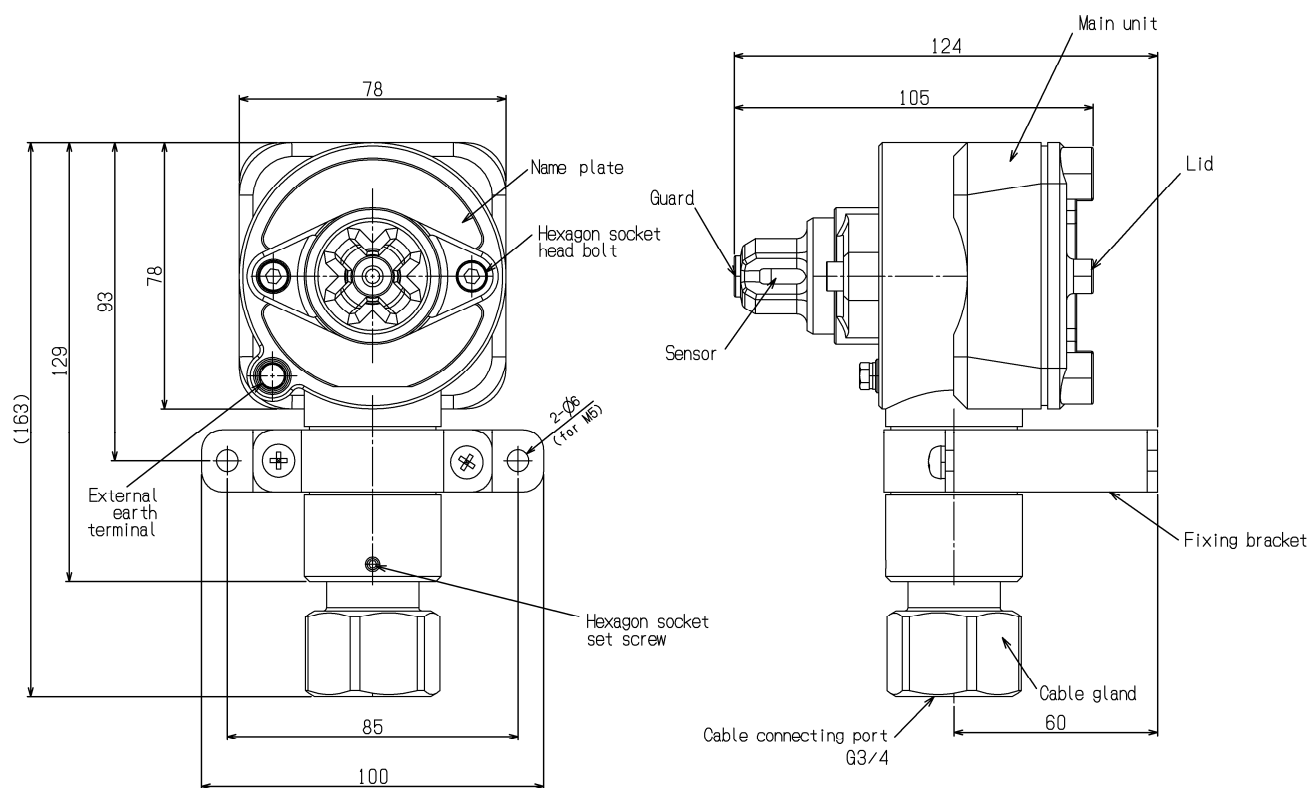
GAS DETECTOR UNIT GD-A80-70 (ATEX - IECEx) SPECIFICATION

Model	GD-A80-70	
Principle of detection	Catalytic combustion method	
Sensor	HW-6212	HW-6239
Detection gas	Combustible gas (Methane excluded), Solvent vapor	Methane, Isobutane, Hydrogen
Detection method	Diffusion type	
Transmission cable	EM CCE/F 1.25mm ² or 2mm ² - 4-core	
Cabling connecting port*1	Pressure proof packing gland <G3/4> (Compatible cables ϕ 9.5 - 13.0mm in outer diameter)	
Operating temperature range	-10 - +100°C (at a constant condition)*2	-40 - +70°C (at a constant condition)
Operating humidity range	Below 95%RH (Non-condensing)	
Structure	Wall mount type, 2B(50A) pipe attachable	
Explosion-proof structure	Flame-proof enclosures	
Explosion-proof class	II 2 G Ex db IIC T4 Gb (ATEX) / Ex db IIC T4 Gb (IECEx)	
Outer dimension	Approx. 78 (W) × 163 (H) × 105 (D) mm (Fixing brackets excluded)	
Weight	Approx. 1.0kg	
Outer color	Munsell 7.5BG5/2 Name plate : red	

*1 Please specify your request when ordering.

*2 The ambient temperature range which maintain a capability of explosion proof of the label on the detector is -40 - +70°C. However, the available operating temperature range is -10 - +100°C.

Outline Drawings



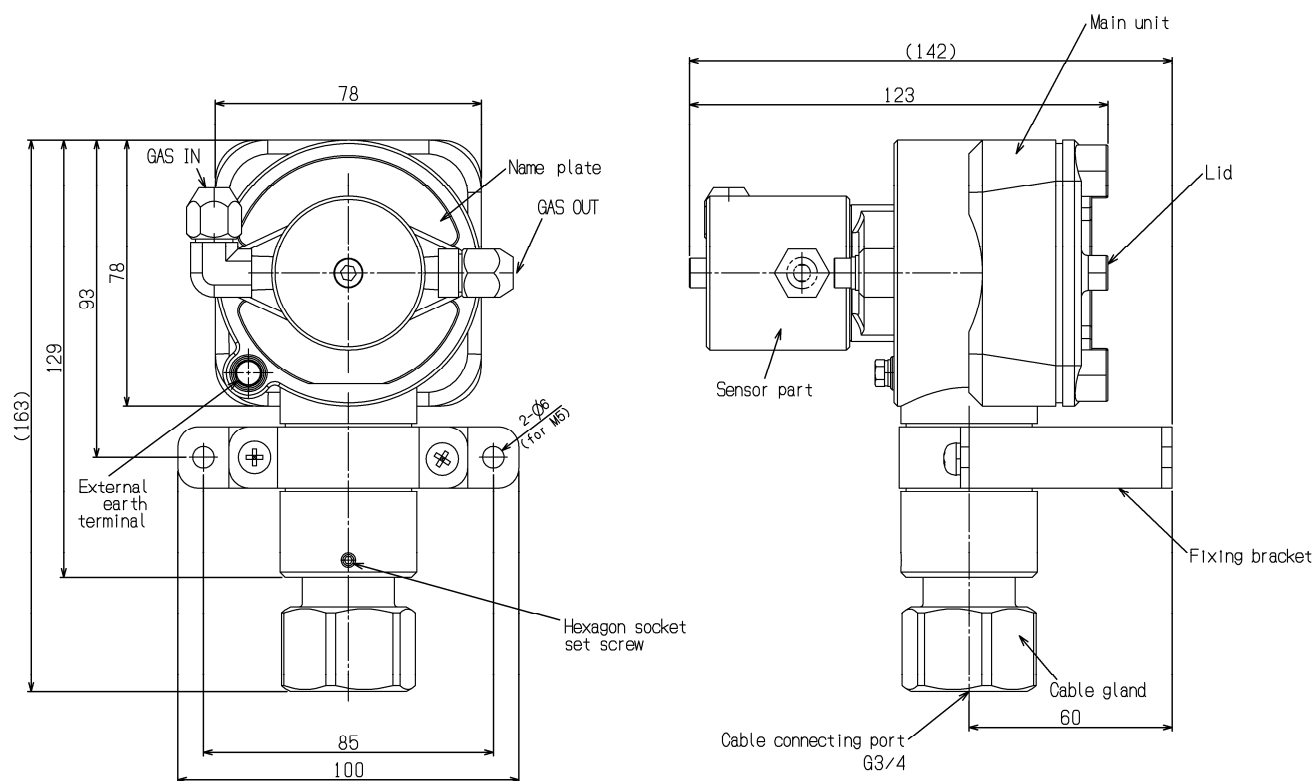
GAS DETECTOR UNIT GD-A80D (ATEX - IECEx) SPECIFICATION

Model	GD-A80D
Principle of detection	Catalytic combustion method / New ceramic method
Detection gas	Combustible gas in the air
Detection method	Suction type (introduced by an external pump unit)
Flow rate	0.8 - 2L/min
Transmission cable	CVV 1.25mm ² or 2mm ² - 4-core
Cabling connecting port* ¹	Pressure proof packing gland <G3/4> (Compatible cables ϕ 9.5 - 13.0mm in outer diameter)
Tube connecting port* ¹	Rc1/8 (O.D ϕ 6-1t) (material: PP or Bs or SUS)
Operating temperature range* ²	-20 - +53°C (at a constant condition)
Operating humidity range	Below 95%RH (Non-condensing)
Structure	Wall mount type, 2B(50A) pipe attachable
Explosion-proof structure	Flame-proof enclosures
Explosion-proof class	II 2 G Ex db IIC T4 Gb(ATEX)/Ex db IIC T4 Gb(IECEx)
Outer dimension	Approx. 78(W) × 163(H) × 123(D)mm (Fixing brackets excluded)
Weight	Approx. 1.0kg
Outer color	Munsell 7.5BG5/2 Name plate : red

*1 Please specify your request when ordering.

*2 The ambient temperature range which maintain a capability of explosion proof of the label on the detector is -40 - +53°C. However, the available operating temperature range is -20 - +53°C.

Outline Drawings



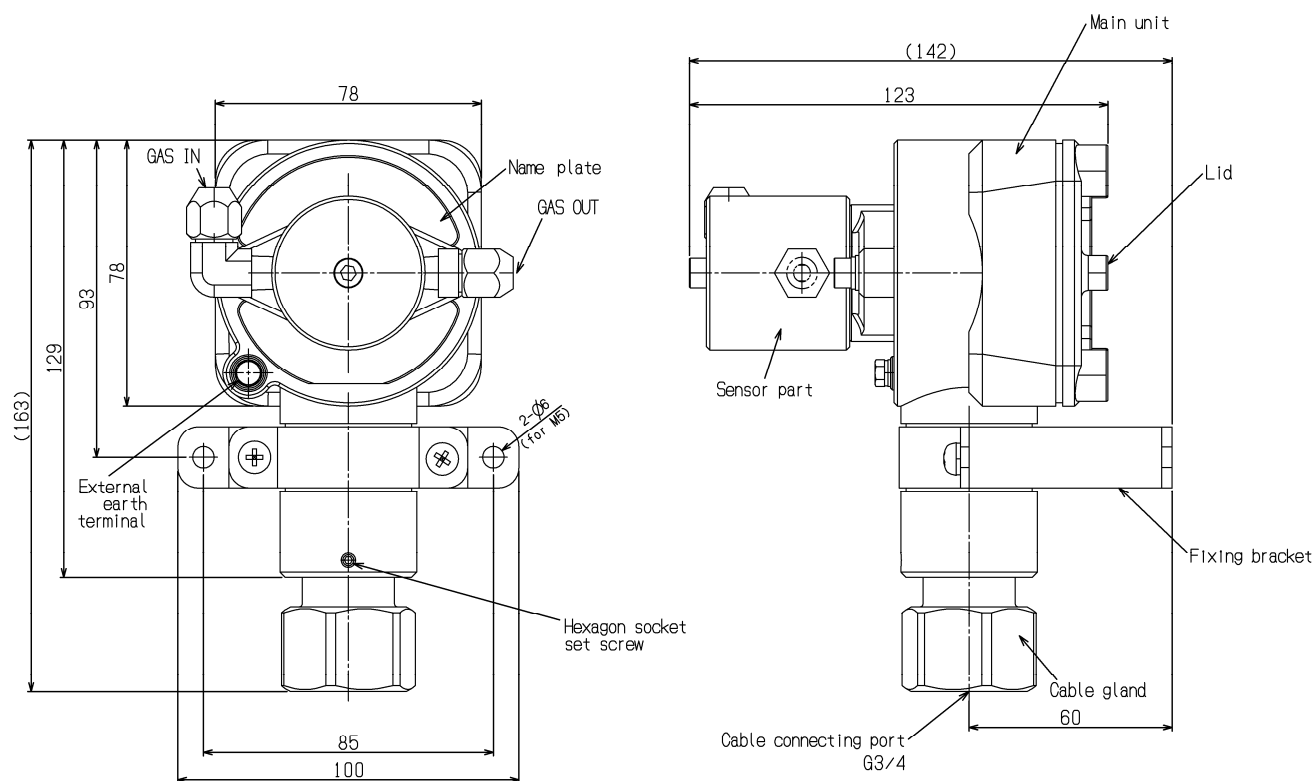
GAS DETECTOR UNIT GD-A80DV (ATEX - IECEx) SPECIFICATION

Model	GD-A80DV
Principle of detection	Semiconductor method
Detection gas	Combustible gas / Toxic gas in the air
Detection method	Suction type (introduced by an external pump unit)
Flow rate	0.8 - 2L/min
Transmission cable	CVVS 1.25mm ² or 2mm ² - 3-core
Cabling connecting port* ¹	Pressure proof packing gland <G3/4> (Compatible cables ϕ 9.5 - 13.0mm in outer diameter)
Tube connecting port* ¹	Rc1/8 (O.D ϕ 6-1t) (material: PP or Bs or SUS)
Operating temperature range* ²	-20 - +53°C (at a constant condition)
Operating humidity range	Below 95%RH (Non-condensing)
Structure	Wall mount type, 2B(50A) pipe attachable
Explosion-proof structure	Flame-proof enclosures
Explosion-proof class	II 2 G Ex db IIC T4 Gb (ATEX) / Ex db IIC T4 Gb (IECEx)
Outer dimension	Approx. 78 (W) \times 163 (H) \times 123 (D) mm (Fixing brackets excluded)
Weight	Approx. 1.0kg
Outer color	Munsell 7.5BG5/2 Name plate : yellow

*1 Please specify your request when ordering.

*2 The ambient temperature range which maintain a capability of explosion proof of the label on the detector is -40 - +53°C. However, the available operating temperature range is -20 - +53°C.

Outline Drawings



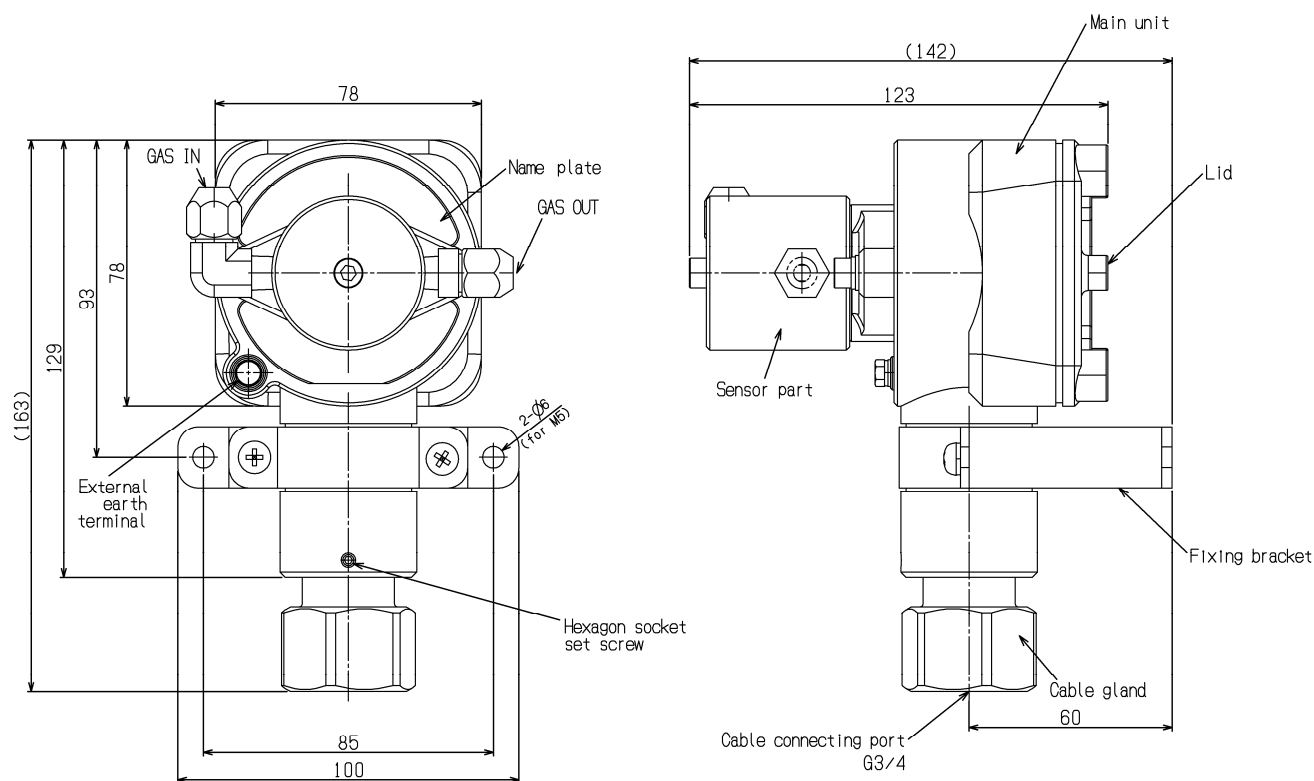
GAS DETECTOR UNIT GD-A80DS (ATEX - IECEx) SPECIFICATION

Model	GD-A80DS
Principle of detection	Hot wire semiconductor method
Detection gas	Combustible gas / Toxic gas in the air
Detection method	Suction type (introduced by an external pump unit)
Flow rate	0.8 - 2L/min
Transmission cable	CVVS 1.25mm ² or 2mm ² - 4-core
Cabling connecting port* ¹	Pressure proof packing gland <G3/4> (Compatible cables ϕ 9.5 - 13.0mm in outer diameter)
Tube connecting port* ¹	Rc1/8 (O.D ϕ 6-1t) (material: PP or Bs or SUS)
Operating temperature range* ²	-20 - +53°C (at a constant condition)
Operating humidity range	Below 95%RH (Non-condensing)
Structure	Wall mount type, 2B(50A) pipe attachable
Explosion-proof structure	Flame-proof enclosures
Explosion-proof class	II 2 G Ex db IIC T4 Gb (ATEX) / Ex db IIC T4 Gb (IECEx)
Outer dimension	Approx. 78 (W) \times 163 (H) \times 123 (D) mm (Fixing brackets excluded)
Weight	Approx. 1.0kg
Outer color	Munsell 7.5BG5/2 Name plate : blue

*1 Please specify your request when ordering.

*2 The ambient temperature range which maintain a capability of explosion proof of the label on the detector is -40 - +53°C. However, the available operating temperature range is -20 - +53°C.

Outline Drawings



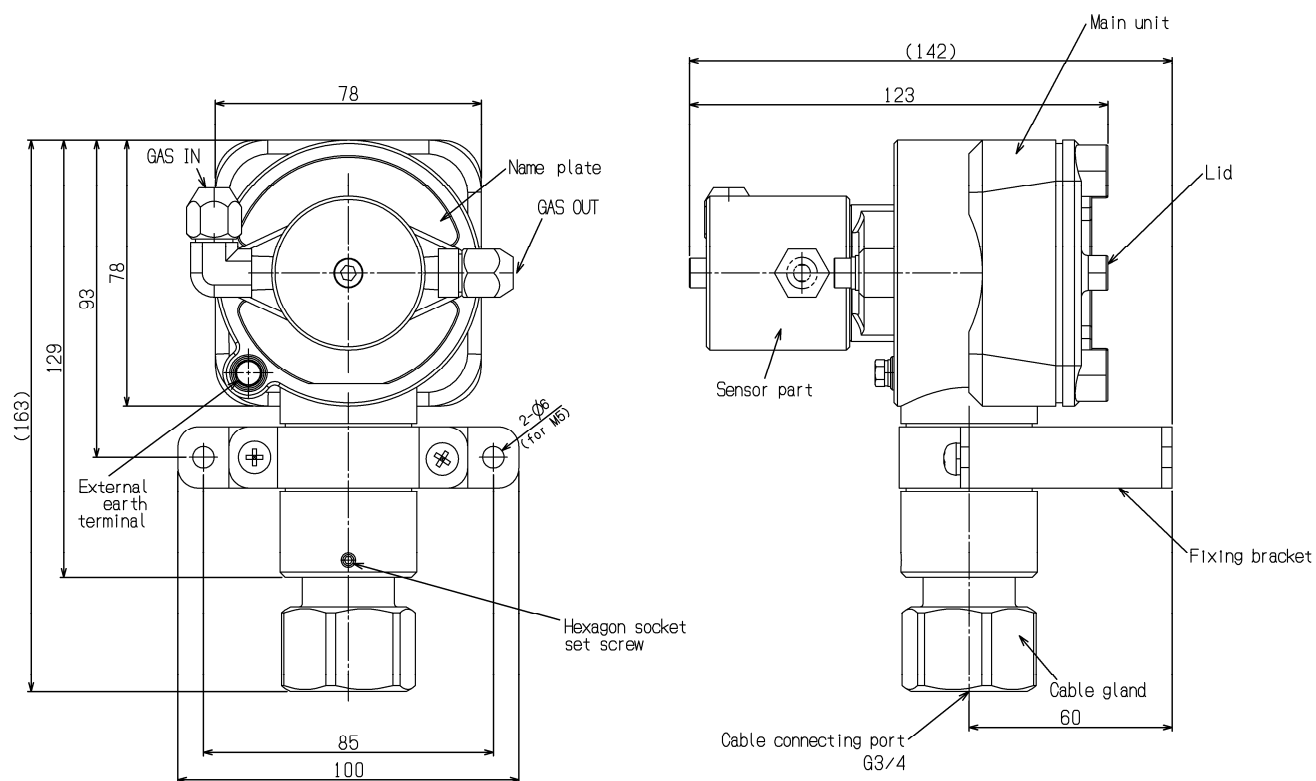
GAS DETECTOR UNIT GD-A80DN (ATEX - IECEx) SPECIFICATION

Model	GD-A80DN
Principle of detection	Thermal conductivity method
Detection gas	Combustible gases in the air/inert gas
Detection method	Suction type (introduced by an external pump unit)
Flow rate	0.8 - 2L/min
Transmission cable	CVVS 1.25mm ² or 2mm ² - 4-core
Cabling connecting port* ¹	Pressure proof packing gland <G3/4> (Compatible cables ϕ 9.5 - 13.0mm in outer diameter)
Tube connecting port* ¹	Rc1/8 (O.D ϕ 6-1t) (material: PP or Bs or SUS)
Operating temperature range* ²	-20 - +53°C (at a constant condition)
Operating humidity range	Below 95%RH (Non-condensing)
Structure	Wall mount type, 2B(50A) pipe attachable
Explosion-proof structure	Flame-proof enclosures
Explosion-proof class	II 2 G Ex db IIC T4 Gb (ATEX) / Ex db IIC T4 Gb (IECEx)
Outer dimension	Approx. 78 (W) \times 163 (H) \times 123 (D) mm (Fixing brackets excluded)
Weight	Approx. 1.0kg
Outer color	Munsell 7.5BG5/2 Name plate : red

*1 Please specify your request when ordering.

*2 The ambient temperature range which maintain a capability of explosion proof of the label on the detector is -40 - +53°C. However, the available operating temperature range is -20 - +53°C.

Outline Drawings



GAS DETECTOR UNIT GD-A80D-70 (ATEX - IECEx) SPECIFICATION

Model	GD-A80D-70	
Principle of detection	Catalytic combustion method	
Sensor	HW-6212	HW-6239
Detection gas	Combustible gas (Methane excluded), Solvent vapor	Methane, Isobutane, Hydrogen
Detection method	Suction type (introduced by an external pump unit)	
Flow rate	0.8 - 2L/min	
Transmission cable	EM CCE/F 1.25mm ² or 2mm ² - 4-core	
Cabling connecting port*1	Pressure proof packing gland <G3/4> (Compatible cables ϕ 9.5 - 13.0mm in outer diameter)	
Tube connecting port*1	Rc1/8 (O.D ϕ 6-1t) <material: PP or Bs or SUS>	
Operating temperature range	-10 - +100°C (at a constant condition)*2	-40 - +70°C (at a constant condition)
Operating humidity range	Below 95%RH (Non-condensing)	
Structure	Wall mount type, 2B(50A) pipe attachable	
Explosion-proof structure	Flame-proof enclosures	
Explosion-proof class	II 2 G Ex db IIC T4 Gb (ATEX) / Ex db IIC T4 Gb (IECEx)	
Outer dimension	Approx. 78 (W) \times 163 (H) \times 123 (D) mm (Fixing brackets excluded)	
Weight	Approx. 1.0kg	
Outer color	Munsell 7.5BG5/2 Name plate : red	

*1 Please specify your request when ordering.

*2 The ambient temperature range which maintain a capability of explosion proof of the label on the detector is -40 - +70°C. However, the available operating temperature range is -10 - +100°C.

Outline Drawings

